

COPYTHORNE PARISH COUNCIL – RIGHTS OF WAY INSPECTIONS – JULY/AUG 2022

**Path 1 (Bridleway 057/1) – Heads west from just north of Goldenhayes, off Bartley Road to the New Forest Boundary, east of Nicholas Corner on Brockishill Road
(637m long - SU3107 1185 to SU3046 1179)**

From the road, this Bridleway starts as RoW Ref 166/17 within the Parish of Netley Marsh. It then becomes RoW 057/1 at a gate as it enters the Parish of Copythorne. It heads west until it reaches the New Forest boundary. Gates and signage at both ends are in good order. Path narrows at western end due to ferns and sapling growth although this does not impact on use.

(D Rigby, Clerk - 11/8/22)

**Path 2 (Footpath 057/2) – Runs diagonally in a north-east direction from Wingfield Farmhouse to Roselands, at the south-eastern corner of Southampton Rd, Cadnam
(128m long - SU2937 1359 to SU2947 1365)**

No issues found. Photos previously supplied remain relevant.

(Cllr. John Goodwin - 22/7/22)



**Path 3 (Footpath 057/3) – Runs west to east between Pound Lane and Barrow Hill Road
(637m – SU3110 1462 to SU3172 1472)**

Weather on day of inspection: Dry after a long period of little or no rain. Signage: Footpath signs visible at both ends of path. Condition: Similar to last year & year before, path overgrown and partially blocked. Work recommended: Arrange for the path to be cleared by the Lengthsman and then re-inspect

(Cllr. Graham Chillcott - 28/7/22)



Both photos from Pound Lane end

(CLERK'S NOTE: Path has since been cleared without intervention of Lengthsman)

**Path 4 (Footpath 057/4) - Runs east from near South Brook Farm on Newbridge Road then south east through Newbridge Inclosure towards Coppithorn Hill House and on to the A31 opposite the School.
(1178m - SU2985 1504 to SU3081 1487).**

No obstructions, path found in good order

(D Rigby, Clerk – 11/8/22)

Path 5 (Footpath 057/5) - Runs from gate to left of Scout Hut entrance on Romsey Road, behind rear of St Mary's Church to Vicarage Lane junction with Pollards Moor Road (651m – SU3078 1476 to SU3050 1430)

Behind the church pathway itself is passable. I clipped those leader brambles back on my way journey down on one side to Vicarage Lane. Both kissing gates are in good order and clipped those brambles on my return journey too. The scout car park is clear of the fallen oak however the main trunk is yet to be cleared although it doesn't lie on the route of the path. The finger board at the junction of Vicarage Lane and Pollards Moor Road is in a sorry state.

(Cllr. Sylvia Wiggins – 19/8/22)



Various photos along the path

(CLERK'S NOTE:- Broken signpost reported to HCC Countryside service)

Path 6 (Footpath 057/6) - Path starts at southwest corner of the Scout Hall field marked by a Right of Way post and ends just north of Brooksbank on Pound Lane (305m – SU3079 1470 to SU3107 1476)

At Pound Lane end the stile treads are old and weathered but sound. Brand new finger sign board and post. However a elderly couple walking their dog mentioned the top rail on the stile much too high for them to climb over safely. Behind Copythorne school two warning signs regarding livestock in field are in place, again the treads on stile are sound and firm, metal hand rail in place too.

(Cllr. Sylvia Wiggins – 19/8/22)



Various photos along the path

Path 7 (Footpath 057/7) – Runs south-easterly from Kluang, Chinham Road, Bartley towards Bourne Road, (continues beyond parish boundary into Parish of Netley Marsh) (261m - SU3119 1283 to SU3143 1273).

Footpath users have to walk around heavily overgrown area along boundary - as in previous years. End style footboard broken at parish boundary. Photos previously supplied remain relevant.

(Cllr John Goodwin – 22/7/22)

(CLERKS NOTE: Vegetation on route and broken stile reported to HCC Countryside Service again.)



Chinham Road end



Vegetation on route



Broken Stile at eastern end

Path 8 (Footpath 057/8) - Runs South from just west of Coach & Horses PH on Southampton Road to join Path 18

(128m - SU3000 1340 to SU2996 1327)

No issues found. Photos previously supplied remain relevant.

(Cllr. John Goodwin –22/7/22)



Southampton Road end of path



Looking back towards Southampton Rd

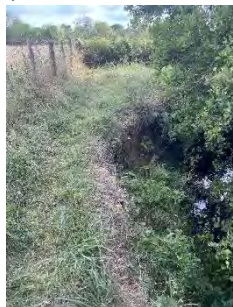
Path 9 (Footpath 057/9) - Runs north from Romsey Road (adjacent to Uncle Tom's Cabin) to Cadnam Common, Cadnam Lane.

(1051m SU29468 14297 to SU29839 13962)

This path goes through fields, under the M27 Motorway and over the Cadnam river. Footpath signs are visible at both ends with several more signs giving directions along the way. Starting at Romsey road, an unmade road takes you to the start of the path. Fence previously falling over has been repaired. The path between the horse field and the motorway prior to reaching the underpass has been recently cleared of overgrowth. The path running along the Cadnam river just prior to the overbridge was previously noted to have eroded away leaving quite a narrow path with a 3 foot drop to one side but this does not appear to have worsened any more in the past year. After the overbridge the path crosses fields with livestock before ending at Cadnam Common.

Suggested actions Cut back the vegetation on the path between the M27 underpass and the Cadnam river overbridge. Report eroded bank to HCC Countryside service

(Cllr Jackie Rhodes, accompanied by the Clerk – 1/9/22)



(CLERK'S NOTE:- Issues above reported to HCC Countryside Service)

Path 10 (Footpath 057/10) – Southern end start is at junction of A36 with Shelley Lane, then runs north to Parish Boundary just beyond Hammonds Farm.

(1378m – SU3203 1755 to SU3190 1882)

From A36, shown by foot path sign (Photo A), down tarmacked drive, bearing right before heading off left through wooded, shrubbed area (Photo B). Both footpath signs are a little over grown. Posts with indicators are clear. Route clear until enters wooded area. Pathway passible but over grown.

(Cllr. Sarah Coombs – 20/8/22)



Photo A



Photo B

Path 11 (Footpath 057/11) – Eastern end of path is on Southern side of A36 about 100m west of Shelley Lane, then runs broadly south west crossing Half Moon Common ending on Blackhill Road near Swallowfield Cottage

(3085m – SU3190 1759 to SU2906 1687)

Foot path 11 runs from the A36, the foot path sign is broken (PHOTO A), it continues down a track, past a gateway and along a wooded walk. The first stile is over grown (B). The sign posts are slightly overgrown but can be clearly read (C). The gravel track is clear although the edges are overgrown (D), a further National Trust Sign is visible but growth around. The next stile is clear. From the enclosed area you head out on to open forest. Without a map or compass it is unclear in which direction to head to find the footpath sign post indicating start / end (E).

(Cllr. Sarah Coombs – 20/8/22)



Photo A



Photo B



Photo C

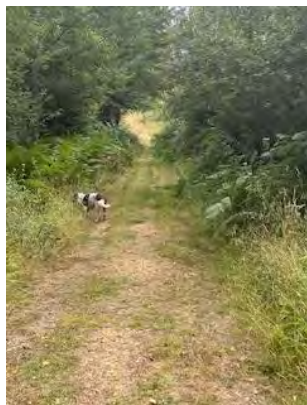


Photo D



Photo E

(CLERK'S NOTE: Clerk will walk path again with benefit of OS Mapping and GPS to identify correct line and then report issues to HCC Countryside Service and/or National Trust.)

**Path 12 (Footpath 057/12) - Starts on north side of Romsey Road heading north west to then run west parallel with M27 until it reaches Newbridge Road (just before motorway bridge)
(178m – SU3047 1455 to SU3031 1454)**

Finger board post and stile are sound, just a little vegetation to clear, all remains the same as last year. I did clip back to uncover the Newbridge Road sign.

(Cllr. Sylvia Wiggins 19/8/22)



Newbridge Road Stile



Newbridge Road sign

**Path 13 (Footpath 057/13) - Runs south-easterly from Petrol station on Southampton Road, Cadnam towards Old Lyndhurst Road
(102m - SU2975 1385 to SU2983 1379)**

This footpath is a tarmac path that runs past the premises of M&J Mobility. The tarmac is in reasonably good condition but has a drain in the middle, as well as some rough paving at the Budgens end that could be potential tripping hazards. The footpath sign on the Old Lyndhurst Road end of the path is in good order but the footpath sign at the Romsey Road end of the path is missing.

Suggested Actions: Mark up the drain and uneven concrete warning of tripping hazards (photos attached). New footpath sign needed on Romsey Road.

(Cllr. Jackie Rhodes 1/9/22)



(CLERKS NOTE: Missing footpath sign and raised drain cover reported again to HCC Countryside Service.)

Path 14 (Footpath 057/14) – Runs from tight “elbow” bend on Barrow Hill Road to Whitemoor Lane where it ends near entrance to Stonyford.

(299m – SU3187 1526 to SU3214 1540)

Weather on day of inspection: Dry after a long period of little or no rain. Signage: Footpath sign at Whitemoor Lane end has fallen over and the lower end is buried. Condition: Generally good. Work recommended: Arrange for footpath sign to be re-instated.



(CLERKS NOTE- Sign issue reported to HCC Countryside service)

Path 15 (Footpath 057/15) – Runs from tight “elbow” bend on Barrow Hill Road to Whitemoor Lane where it ends near entrance to Green Pastures Farm

(401m – SU3187 1526 to SU3207 1561)

Weather on day of inspection: Dry after a long period of little or no rain. Signage: Footpath signs visible both ends of path. Condition: Generally good, but as last year slightly overgrown at Barrow Hill Road end. Evidence of serially dumped dog poo bags at Barrow Hill Road end under footpath sign. Work recommended: None. (Cllr. Graham Chillcott – 28/7/22)

Path 16 (Footpath 057/16) – Runs from tight “elbow” bend on Barrow Hill Road to Whitemoor Lane where it ends slightly north of Whitemoor Pines.

(594m – SU3187 1526 to SU3218 1531)

Weather on day of inspection: Dry after a long period of little or no rain. Signage: Footpath signs visible at both ends of path. Condition: Fallen tree (photo 1) blocking path approximately 100 metres from Whitemoor Lane end. The tree looks to have been down for some time. Note that an unofficial diversion to skirt the fallen tree, has led to path becoming overgrown and little used at the Whitemoor Road end (photo 2). Evidence of serially dumped dog poo bags at Barrow Hill Road end under footpath sign. (Cllr. Graham Chillcott – 28/7/22)



(CLERK'S NOTE: issues reported to HCC Countryside service)

Path 17 (Footpath 057/17) Runs from the end of Newbridge Road (just east of Newbridge Farm) initially east towards Copythorne Common and then southwest (parallel to the M27) before joining Path 4 to cross the A31 (1963m - SU3001 1558 to SU3076 1492).

No issues found

(Clerk – 11/8/22)

Path 18 – Bridleway 057/18 Runs in a north-westerly direction from near Brookfield, Beechwood Road, Bartley to just behind Foundry House on Southampton Road, Cadnam (989m - SU3046 1287 to SU2968 1346)

No issues found except finger "footpath" marker missing on post at Cadnam end - as reported on previous occasions. Photos previously supplied remain relevant

(Cllr. John Goodwin –22/7/22)



Eastern end – Beechwood Road



Broken Finger post at Cadnam end

(CLERKS NOTE: Broken finger post reported (once again) to HCC Countryside Service)

Path 501 (Footpath 057/501) - Runs east from Furzley Road (near Crook Hill) and ends at a footbridge which crosses the Cadnam River behind Newbridge House, where it joins Bridleway 502. (450m - SU2936 1543 to SU2979 1555)

At the end of bridleway 502 you come to bridleway 501. It starts with a footbridge that takes you to Cadnam Common. From here the path goes through a wooded area and joins a gravel track. The footpath then follows the gravel track to Crock Hill on Furzley Road where there is a low-level padlocked gate. There are no footpath signs making the footpath difficult to follow unless you know the area.

Suggested Actions: Footpath sign needed on Furzley Road (photo 1). More signage required at the point the footpath joins the gravel track (photo 2)

(Cllr. Jackie Rhodes – 01/09/22)



Photo 1



Photo 2

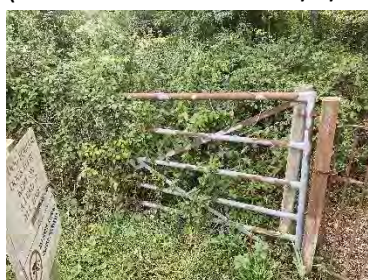
(CLERK'S NOTE: Lack of signage again reported to HCC Countryside Service.)

Path 502 (Bridleway 057/502) Runs from the footbridge at the eastern end of Path 501 along the northern boundaries of Newbridge House and Cranmere Cottage and joins Newbridge Road. (125m - SU2979 1555 to SU2991 1551)

This Bridleway is clearly signposted and runs from Newbridge Road to the footbridge leading to Cadnam Common, passing between Newbridge House and Cranmere Cottage. It is at this footbridge that footpath 501 begins. The bridleway is very well maintained with a secure metal gate prior to the footbridge. The footbridge is very narrow and would not be able to take a horse. The gate to the side of the path is inaccessible with the riverbank too steep for horses to cross.

Suggested actions: Either a lot of work is needed to make this accessible for horses or this should be just a footpath and not a bridleway (see photos).

(Cllr. Jackie Rhodes – 1/9/22)

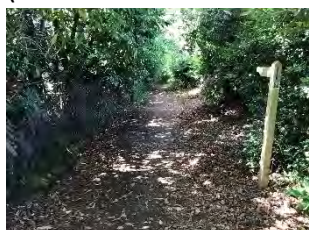


(CLERK'S NOTE:- When this issue was reported last year the HCC Countryside Service said "The photo shows a typical historic New Forest footbridge, which sits alongside a ford. Equestrians would ford at this point and not use the bridge itself to access the open forest. I will ask them again to consider what action needs to be undertaken and by whom to allow this path to be used as a bridleway.)

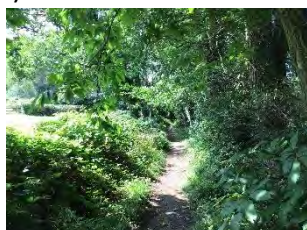
Path 503 (Restricted Byway – 057/503) Runs from the northern side of the A36 (Salisbury Road) opposite the junction with Blackhill Road in a north west direction to exit onto Whinwhistle Road (208m – SU 3043 1833 to SU3061 1842)

Footpath 503 is a restricted byway, it runs from the A36, through to Whinwhistle Road, it is clear and easy to use. Acts, as a shortcut. Photos are from 2021 but remain relevant.

(Cllr. Sarah Coombs – 20/8/22)



Whinwhistle Rd end



Middle of path



View down path

Path 504a (Restricted Byway – 057/504a) Runs from the eastern end of Storms Farm Road to the junction of Cadnam Common Road & Cadnam Lane.

(695m – SU2892 1490 to 2956 1516)

One of our newest “RoW” confirmed in 2008. This Restricted Byway (for pedestrians, horse-riders, cyclists and horse-drawn carriages only) starts at Storms Farm where the tarmac road ends and heads broadly east -north-easterly on open land onto Cadnam Common. The path is not easily seen in places but there are no issues to its use. No stiles, footbridges or gates.

(D Rigby, Clerk - 11/8/22)



Start at Storms Farm



End near Cadnam Common Road

Path 504b (Restricted Byway – 057/504b) Runs as a spur roughly 270 metres from the start of the above path and heads in an easterly direction ending on Cadnam Lane approx. 150m south of its junction with Cadnam Common Lane

(430m – SU2916 1499 to SU2957 1501)

Another Restricted Byway (see Path 504a above), the exact point of the split from Path 504a above is not that clear although tracks made by horse riders exist to aid wayfinding. No stiles, footbridges or gates. (D Rigby, Clerk - 11/8/22)



Start point



End point on Cadnam Lane

- END -